



# TwinBasin<sup>xn</sup>



**Promoting Twinning of River Basins for  
Developing Integrated Water Resources  
Management Practices**

**Martinica - 25/01/2004**

## Promoting Twinning of River Basins for Developing Integrated Water Resources Management Practices

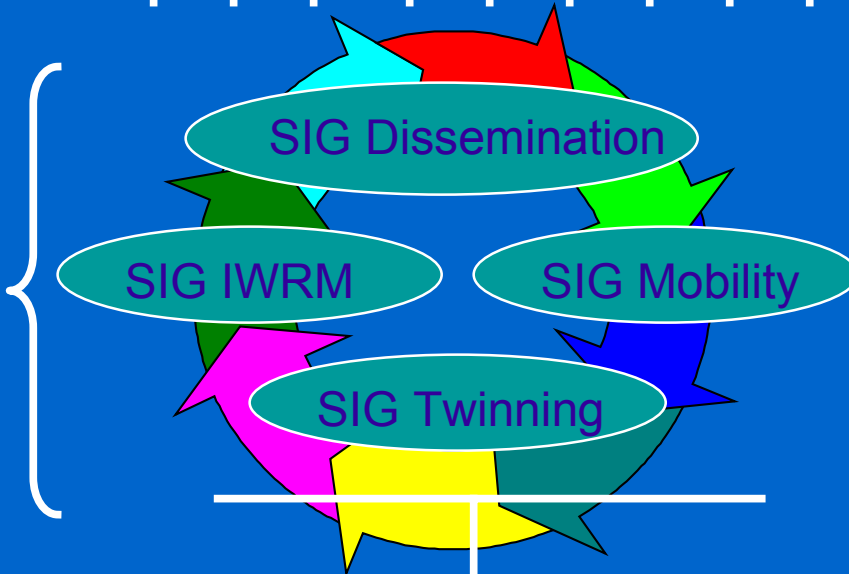
- **Objective :**
  - Developing Integrated Water Resources Management (IWRM) good practices, by focusing on Human Resources Development in Basin Organisations
- **Means :**
  - Promotion of Twinning agreements between Basin Org. and support of joint activities for HRD
- **Why :** Support for implementation of
  - Water Framework Directive
  - European Union Water Initiative « *Water for Life* »

- Activities :
  - ▶ Think Tank for fruitful twinning between members  
*(Model agreements, type of activities, reporting, ...)*
  - ▶ Promotion of twinning North-South, S-S, N-N  
*(Partner search facility, ...)*
  - ▶ Support for peer-to-peer exchanges and staff mobility  
*(hands-on periods in sister-organisation)*
  - ▶ Bottom-up identification and promotion of practices  
*(hands-on reporting, community exchanges, web seminars, ...)*
  - ▶ Dissemination of research outcomes  
*(web seminars, community exchanges, ...)*

- Description

- A Memorandum of Understanding (MoU) as voluntary commitment to participate to the exchanges
- Creation of working groups among participants (Special Interest Groups - SIGs) for production of guidelines, white papers and models (both on twinning and IWRM)
- Implementation of an IT infrastructure for communication (collaborative work, news dissemination, web conferences, ...) and knowledge management
- Supply of grants for supporting staff mobility (according to rules to be defined by the appropriate SIG)

Models, rules, recommendations, reports, practices, seminars



**MoU**  
the entry point

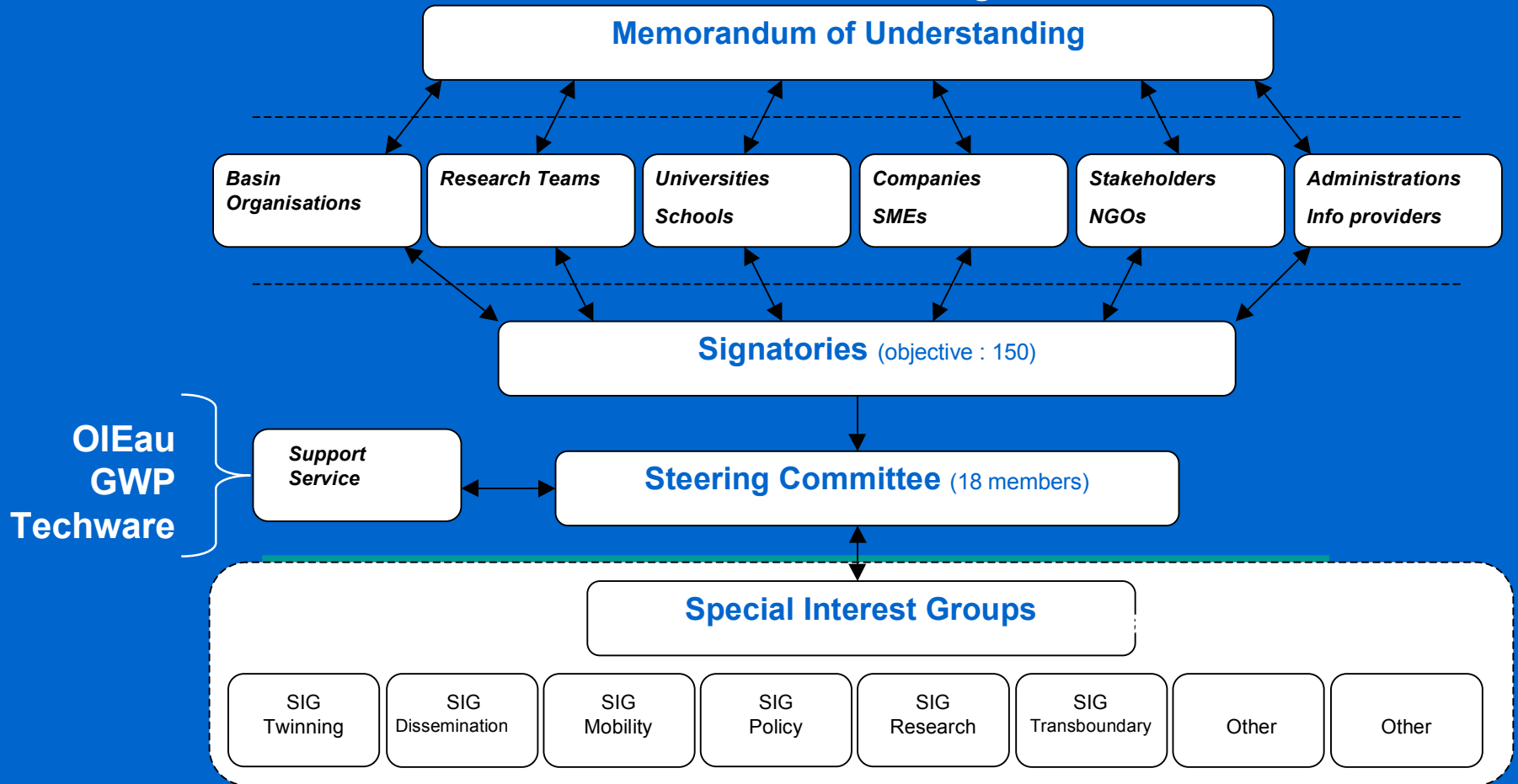
Staff  
Mobility

Efficient Twinning

## • Partners

- International Office for Water
- Agence de l'Eau Seine Normandie (France)
- International Network of Basin Organisations
- Ea Pôle de l'eau (France)
- Confederacion Hidrografica del Jucar – MENBO (Spain)
- Secretaria de Recursos Hídricos - SRH - Ministry of Environment (Brazil)
- Global Water Partnership (Sweden)
- Techware - Hydrocontrol (Italy)
- RZGW – Gdansk (Poland)
- National Water Authority - OVF (Hungary)
- Interstate Co-ordination Water Commission – Aral Sea (Uzbekistan)
- Jara Tirta I Corporation (Indonesia)
- African Network of Basin Organisations - ANBO (Africa - Niger)
- Basin Agency Algerois – Hodna – Soumman (Algeria)
- Hydraulic Basin Agency – Sebou (Morocco)
- Organisation pour le Mise en Valeur du Senegal (Senegal)
- Comision Nacional del Agua - CNA (Mexico)
- Apele Romane (Romania)

# TWINBASIN<sup>xn</sup> Working Structure



- ## The Steering Committee

- To develop a MoU **strategy** and to produce a rolling **plan of action**, with planned activities, expected outputs and significant milestones - and to monitor the implementation of the MoU.
- To identify the **need for Special Interest Groups** and to direct and review the activities of Special Interest Groups as set up within the framework of the MoU.
- To identify **barriers to the implementation of IWRM principles** and to organise **exchange of information** and creation of awareness to dismantle these barriers.

- **The Steering Committee**
  - To review the **integration of recommendations and draft agreements** from SIGs into a coherent **set of guidelines** and, when appropriate, submit them to policy-making organisations
  - To liaise with the services of the Commission in obtaining the **widest possible public**, professional, industrial and political endorsement of these guidelines.
  - To ensure that the activities of the signatories come to the attention of other **key or emerging participants in this field**, and endeavour to involve them in the process - ideally through the signature of the MoU.

- **Special Interest Groups - SIGs**
- **SIG Twinning :**
  - promotion of twinning agreements between BO,
  - setting of operating rules for profitability of the exchanges ;
  - organising financial support of the project to the mobility of BO professionals.
- **SIG Dissemination :**
  - knowledge management from research and from twinning activities,
  - identification / implementation of diffusion ways (including e learning) ;
- **SIG Mobility :** delivering allowances when all criteria are fulfilled
- **SIGs on IWRM topics :** later, to promote the exchanges on the practices identified in BO-members

- **TwinBasin<sup>XN</sup> Support Service**
  - **Network Support - Internal support to the TWINBASIN<sup>XN</sup> Community through :**
    - ◆ a newsletter and a dynamic website
    - ◆ a partner directory and partner search facility
    - ◆ organisation of TWINBASIN<sup>XN</sup> events
    - ◆ methodology and technology watch
    - ◆ a help desk for twinning including management of support for mobility of personnel
    - ◆ Continuous Education & Training initiatives
  - **Marketing - External relations for the TWINBASIN<sup>XN</sup> Community and beyond**

- Facts and figures

- A core group of 18 participants (actual contractors) as the Steering Committee of the project
- Participation to the SIGs : open to all MoU signatories (other Basin Org., Administrations, NGOs, Research teams, Universities, SMEs, ...) - objective = 150 members

- Facts and figures

- Boosting at least 25 to 30 agreements based on SIG recommendations during the 4-year project
- Mobility grants for at least 60 staff members during periods of 2 weeks - 2 months (120 man-months) open to BO - MoU signatories (practitioners)
- Link with other twinning-related FP6 projects (cluster)

- Duration : 4 years (Starting date : January 1st, 2004)
- Budget : EUR 900.000
- Supported by the European Commission -  
DG Research under 6th Framework Program

- Inputs from Partners
  - participation of high-level staff to Steering Committee (5 meetings - coupled with INBO events)
  - participation of experts to SIGs exchanges at a distance
  - involvement in staff mobility (if needed)
- Support from the project to the partners
  - support to participate at the SC meetings (EUR 6.500)
  - financial support to staff mobility (EUR 5.200)

# • Work planning and Timetable

	Year 1				Year 2				Year 3				Year 4			
	1	2	3	4	1	2	3	4	1	2	3	4	1	2	3	4
SC meetings	X					X				X				X		X
Specific. Quality manual	—		X				—		X							
IT infrastructure	—							—								
SIGs inception		X														
SIGs operation	—————															
SIGs progress reports				X				X				X				X
Project progress reports		X			X				X				X			X
External assessment						X						X				X
<b>GO / NOGO evaluation</b>	—————→						<b>X</b>									
MoU revision									X							
Staff mobility rules				X				X								
Mobility support	..... —————															
Knowledge management	—————															
Dissemination	—————															
Leaflet production		X										X				

Main milestones :

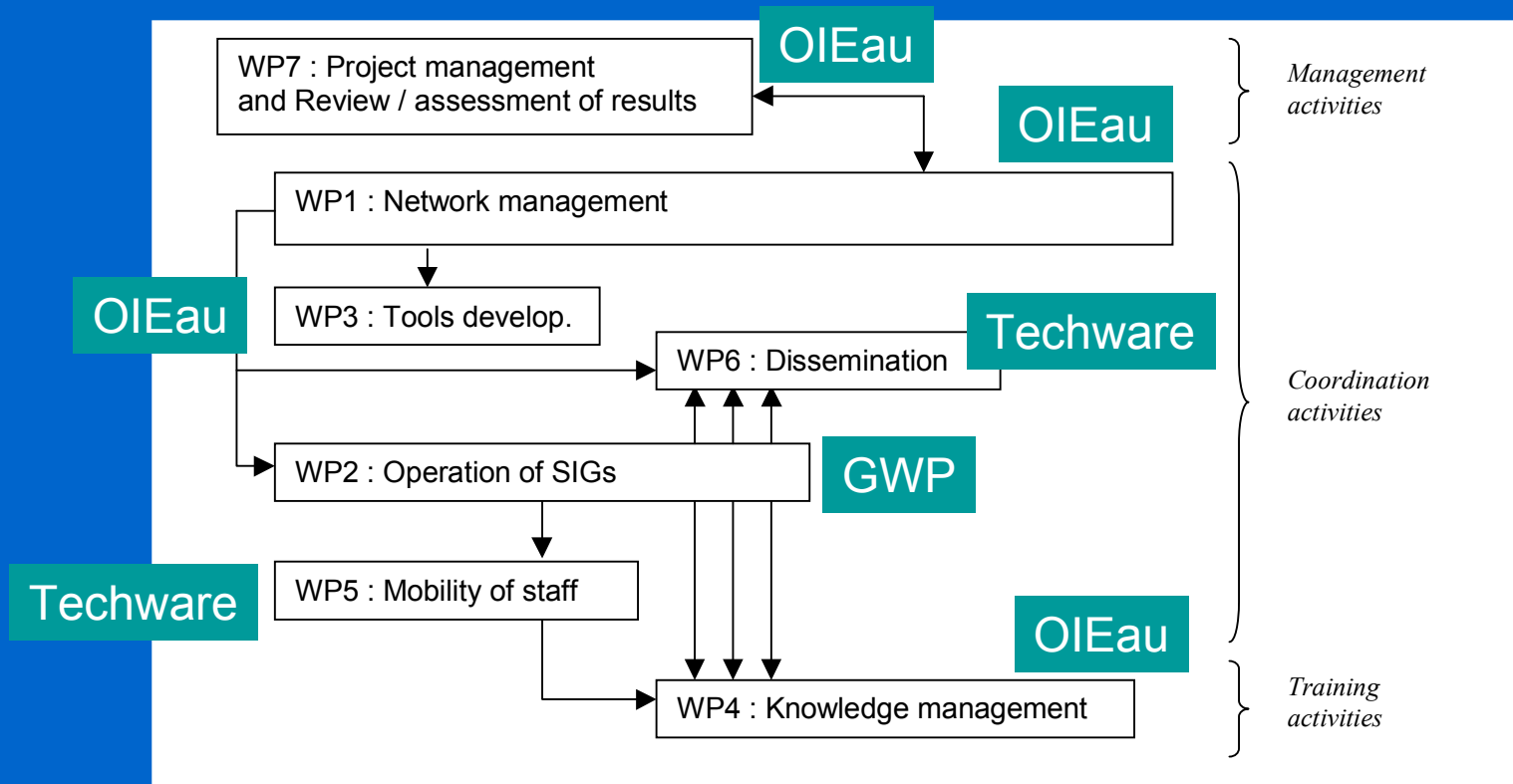
X  
*Official launch*

X  
*First year launch*

X

to be defined later

- Workpackages



- Coming next

- Finalisation of the Description of Work (DoW) and signature of the contract with EC - March 2004
- Signature of the Consortium Agreement - Feb. 04
- Election of the first SIG chairs :  
twinning, mobility, dissemination
- Writing of quality procedures and IT specifications
- Implementation of the IT infrastructure
- Inception of SIGs exchanges
- Leaflet and Web site design

- Additional documents
  - Draft Description of Work - V23
  - Draft Consortium Agreement - V1
  - Memorandum of Understanding - V1
  - Special Interest Groups operation rules - V1
  - Twinning Cluster description - V2



# TwinBasin<sup>xn</sup>



**Promoting Twinning of River Basins for  
Developing Integrated Water Resources  
Management Practices**

**[www.twinbasin.org](http://www.twinbasin.org)**

MARTINICA - 25/01/2004